

# Emerald Harmony cabin plans



## Owner's One-bedroom Suite

CAT SA

At 452ft<sup>2</sup> (42m<sup>2</sup>), this truly spectacular suite boasts a separate bedroom and lounge area, a luxurious en-suite bathroom and a queen-size or twin-style bed plus enjoy a private terrace, with an additional space of 323ft<sup>2</sup> (30m<sup>2</sup>) complete with a hot-tub.



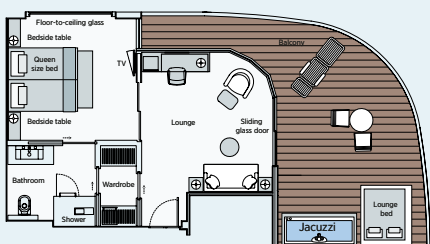
## Grand Balcony Suite

CAT S

Beautifully appointed with a private balcony, these luxurious suites reach 398ft<sup>2</sup> (37m<sup>2</sup>) and host a separate bedroom and lounge. Guests staying in these suites can enjoy the luxe amenities of the en-suite bathroom, as well as breakfast, canapés and after-dinner treats.

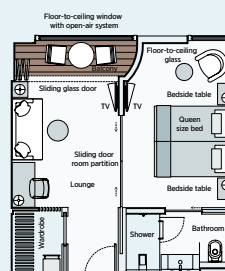
### Owner's One-bedroom Suite

- 452ft<sup>2</sup> (42m<sup>2</sup>) plus 323ft<sup>2</sup> (30m<sup>2</sup>) terrace
- Private terrace with hot-tub
- Separate bedroom and lounge area
- Bathroom with shower, indulgent toiletries, hair dryer, complimentary bathrobes and slippers to use on board
- Walk-in wardrobe
- Complimentary in-suite mini-bar, restocked daily with wine, beer and soft drinks
- Complimentary Nespresso™ machine
- Complimentary Wi-Fi
- Queen-size or twin hotel-style beds
- Pillow menu
- Telephone
- Alarm clock
- Hairdryer
- Safe for your valuables
- Individual climate control
- Flat screen TV and infotainment system
- Continental breakfast, pre-dinner canapés and after-dinner sweet treats served in your suite
- Four items of laundry a day



### Grand Balcony Suite

- 398ft<sup>2</sup> (37m<sup>2</sup>)
- Indoor private balcony with open-air system and separate door to close from living room
- Separate bedroom and lounge area
- Bathroom with shower, indulgent toiletries, hair dryer, complimentary bathrobes and slippers to use on board
- Walk-in wardrobe
- Complimentary in-suite mini-bar, restocked daily with wine, beer and soft drinks
- Complimentary Nespresso™ machine
- Complimentary Wi-Fi
- Queen-size or twin hotel-style beds
- Pillow menu
- Telephone
- Alarm clock
- Hairdryer
- Safe for your valuables
- Individual climate control
- Flat screen TV and infotainment system
- Continental breakfast, pre-dinner canapés and after-dinner sweet treats served in your suite
- Two items of laundry a day





## Emerald Panorama Balcony Suite

CAT AP

CAT A

CAT B

A private indoor balcony design and drop-down window is perfect for enjoying the ever-changing views. Reaching 273ft<sup>2</sup> (25.4m<sup>2</sup>), relax and unwind in your opulent en-suite bathroom, complete with toiletries, and sleep soundly in your queen-size or twin hotel-style bed.



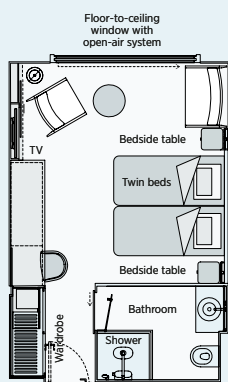
## Emerald Stateroom

CAT D

Providing excellent value for money, they are bigger than the average standard staterooms. Enjoy your time on board in your home-away-from-home, with everything you could possibly need. Emerald Staterooms have porthole windows, a flatscreen TV and a mini-fridge.

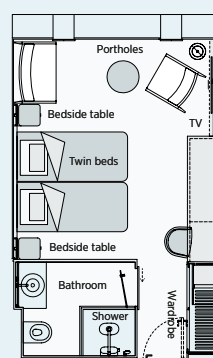
### Emerald Panorama Balcony Suite

- 273ft<sup>2</sup> (25.4m<sup>2</sup>)
- Indoor balcony with open-air system
- Bathroom with shower, indulgent toiletries, hair dryer, complimentary bathrobes and slippers to use on board
- Complimentary Wi-Fi
- Queen-size or twin hotel-style beds
- Telephone
- Alarm clock
- Hairdryer
- Safe for your valuables
- Individual climate control
- Flat screen TV and infotainment system
- Mini-fridge



### Emerald Stateroom

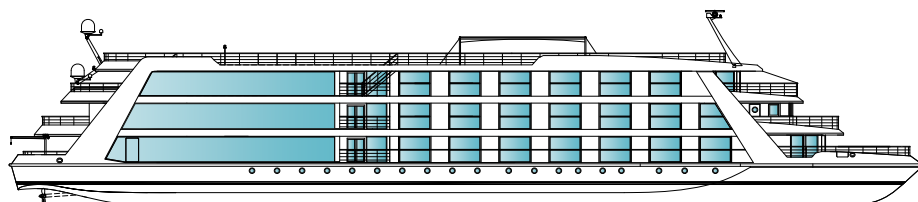
- 256ft<sup>2</sup> (23.8m<sup>2</sup>)
- Port-hole window
- Bathroom with shower, indulgent toiletries, hair dryer, complimentary bathrobes and slippers to use on board
- Complimentary Wi-Fi
- Queen-size or twin hotel-style beds
- Telephone
- Alarm clock
- Hairdryer
- Safe for your valuables
- Individual climate control
- Flat screen TV and infotainment system
- Mini-fridge



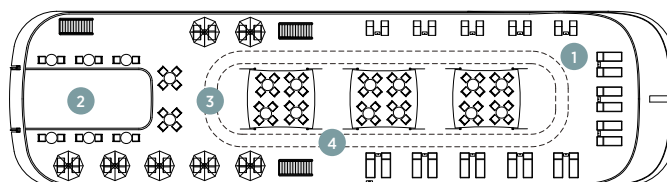
# Mekong deck plans

## Emerald Harmony

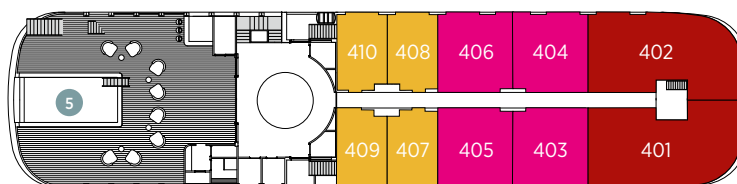
• Built: 2019 • Length: 239ft (73m) • Guests: 84 • Cabins: 42 • Crew Members: 40



Sun Deck



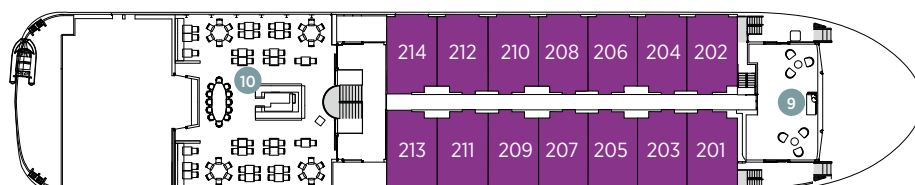
Pool Deck



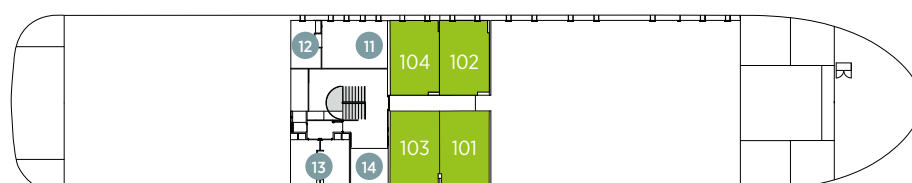
Horizon Deck



Vista Deck



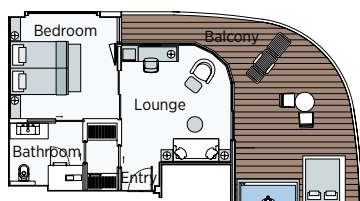
Riviera Deck



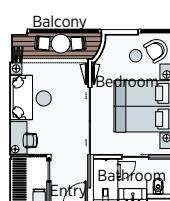


Cabin Categories		
Pool Deck		Size ft <sup>2</sup> (m <sup>2</sup> )
<b>CAT SA</b>	Owner's One-bedroom Suite	452ft <sup>2</sup> (42m <sup>2</sup> )
<b>CAT S</b>	Grand Balcony Suite	398ft <sup>2</sup> (37m <sup>2</sup> )
<b>CAT AP</b>	Emerald Panorama Balcony Suite	273ft <sup>2</sup> (25.4m <sup>2</sup> )
Horizon Deck		Size ft <sup>2</sup> (m <sup>2</sup> )
<b>CAT A</b>	Emerald Panorama Balcony Suite	273ft <sup>2</sup> (25.4m <sup>2</sup> )
Vista Deck		Size ft <sup>2</sup> (m <sup>2</sup> )
<b>CAT B</b>	Emerald Panorama Balcony Suite	273ft <sup>2</sup> (25.4m <sup>2</sup> )
Riviera Deck		Size ft <sup>2</sup> (m <sup>2</sup> )
<b>CAT D</b>	Emerald Stateroom	256ft <sup>2</sup> (23.8m <sup>2</sup> )

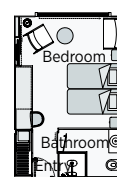
- 1 Sun Deck with Deck Chairs<sup>^</sup>
- 2 Retractable Sun Shade Roof
- 3 Games Area
- 4 Walking Track
- 5 Daytime Pool & Bar
- 6 Wheel House
- 7 Reception
- 8 Horizon Bar & Lounge
- 9 Lotus Lounge
- 10 Reflections Restaurant
- 11 Fitness Area
- 12 Guest Self-Service Laundry
- 13 Wellness Area
- 14 Hairdresser



Owners Suite  
452ft<sup>2</sup> (42m<sup>2</sup>)  
**CAT SA**



Grand Balcony Suite  
398ft<sup>2</sup> (37m<sup>2</sup>)  
**CAT S**



Emerald Panorama Balcony Suite  
273ft<sup>2</sup> (25.4m<sup>2</sup>)  
**CAT AP CAT A CAT B**



Emerald Stateroom  
256ft<sup>2</sup> (23.8m<sup>2</sup>)  
**CAT D**

**Important Information:** The cabin, deck plans, sizes and photographs are an indication only and are subject to variation.

<sup>^</sup> Due to safety, the Sun Deck will be closed when travelling under low bridges.

Cabin 202 has a smaller bathroom than other Category B bathrooms. Cabins 301 & 302 have a partially obstructed view from the balcony. The balcony window size is not impacted however the Star-Ship structure covers a section of the window.